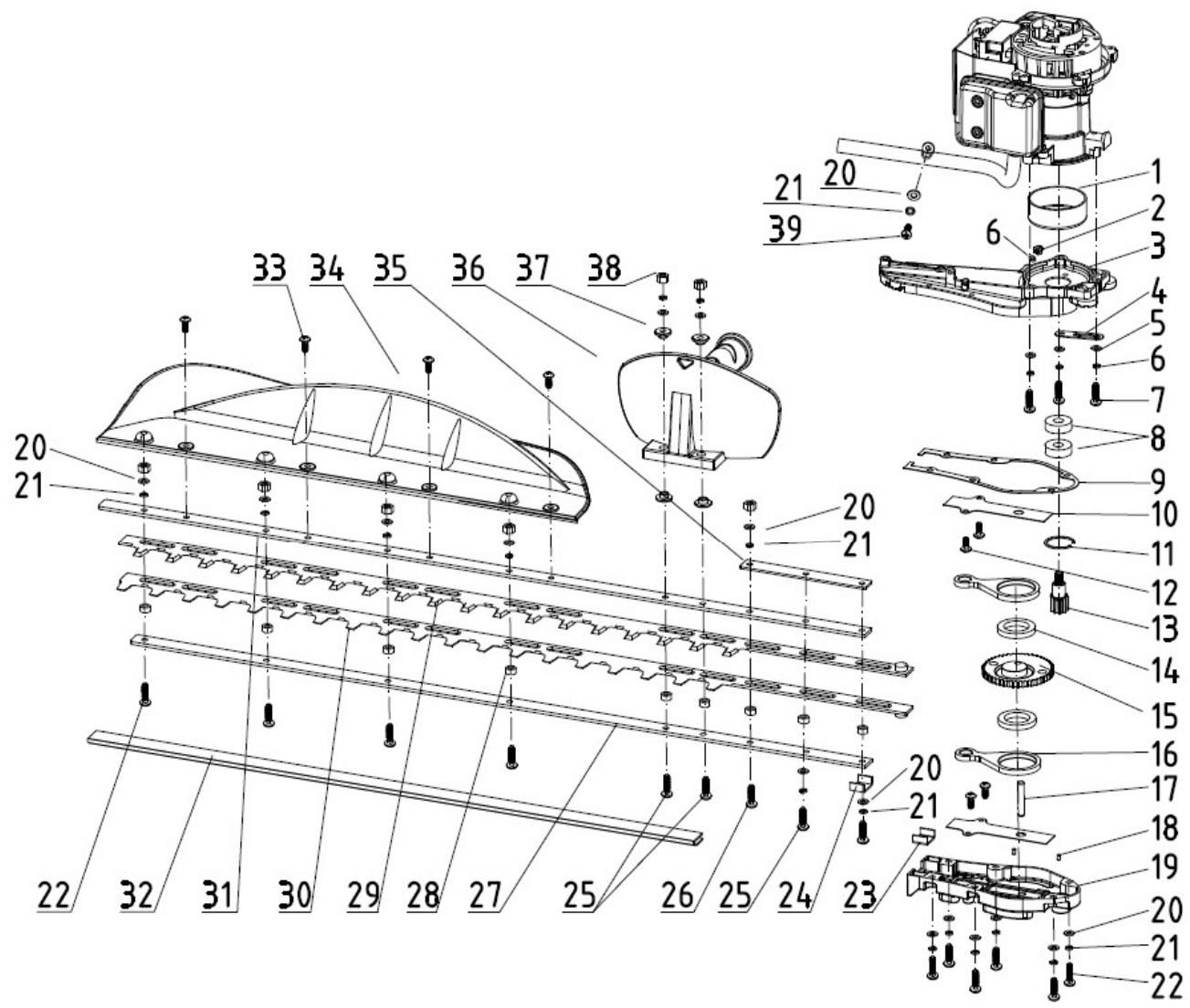


THT245S_ Encloser unit

THT245S ENCLOSER UNIT

NO.	Part num	Description (En)	BOM NO.	QTY	NO.	Part num	Description (En)	BOM NO.	QTY
1	THT245D.00.00-3	muffler cover	04.06.01.04608	1	31	GJB25D.00.00-5	rubber washer	03.04.1.001	2
2	GB/T818	screw M5×12	01.01.3181	1	32	GJB25D.03.01-00	fuel cap assembly	05.01.04.1196	1
3	GB/T845	tapping screw ST4.2×13	01.01.3121	10	33	GJB25D.00.00-7	fuel tank absorber	03.04.1.002	1
4	GJB25S.00.00-15	supported beam base	06.06.337	1	34	YD45.03.03-00	fuel filter	04.01.04.10706	1
5	GJB25S.00.00-17	absorber bush	03.04.1.010	2	35	GJB25D-2.03.00-2	fuel tube	03.04.1.008	1
6	GJB25S.00.00-16	absorber	03.04.1.015	4	36	GJB25D-2.03.00-3	return tube	03.04.1.009	1
7	GB/T70.1	screw M5×45	01.01.3211	2	37	GJB25D.03.00-1	fuel tube base	03.04.1.003	1
8	GB/T93	spring lock washer 5	01.04.0091	4	38	YD62.02.00-3	starter handle	04.01.03.03606	1
9	GJB25S.00.00-18	plain washer	03.04.1.011	2	39	GJB25D.02.00-3	rope	04.03.0004001	1
10	GB/T6186	hexagon nut with flange M5	01.03.0102	3	40	YD25.02.01-2	rope jacket	04.04.0000206	1
11	GJB25S.05.00-8	supported beam block	06.06.336	1	41	THT245D.02.01-1	starter cover	04.06.01.04708	1
12	GB/T70.1	screw M5×35	01.01.3261	2	42	TBC261D.01.12.00-5	coil spring	00.06.01.035	1
13	GB/T96	big plain washer 5	01.04.0161	3	43	THT245D.02.00-1	reel	04.THT245D.040000	1
14	GJB25S.05.00-7	rear handle supported beam	03.04.1.014	1	44	THT245D.02.01-2	torsion spring	06.03.112	1
15	YD38-3.01.11.04-00	engine switch	02.05.23	1	45	THT245D.02.01-3	ratchet wheel	04.06.01.04908	1
16	GJB25S.05.00-1	rear handle right cover	04.06.01.02605	1	46		washer 5×12×1.5	01.04.0123	1
17	GJB25S.05.00-3	trigger	04.06.01.02906	1	47	GB/T845	tapping screw ST4.8×14	01.01.4111	1
18	GJB25S.05.00-5	trigger lock	04.06.01.03006	1	48	GB/T818	screw M5×16	01.01.3111	4
19	GJB25S.05.00-4	trigger torsion rod spring	06.03.318	1	49	THT245D.02.00-4	top cover	04.06.01.04507	1
20	GJB25S.05.00-6	trigger lock torsion rod spring	06.03.319	1	50	GB/T845	screw ST4.8×13	01.01.3172	1

21	GJB25S.05.00-2	rear handle left cover	04.06.01.0 2705	1	51	GJB25D.00.01-00	cord splint	06.06.422	1
22	GB/T818	screw M5×30	01.01.2161	1	52	GJB25D-2.02.00-5	front cover	04.06.01.03701	1
23	GJB25S-2.05.02-00	throttle cable	06.06.482	1	53	GJB25D-2.05.02-1	cable brake	04.06.01.03401	1
24	GJB25S.05.01-00	grounding wire B	02.34.56	1	54	GB/T845	screw M4×14	01.01.3071	1
25	GJB25S.05.03-00	flameout wire C	02.34.57	1					
26	GJB25S.00.00-19	enlace strip 3×100	04.06.01.0 3201	1					
27	GJB25S.05.00-9	lead bushing	04.06.01.0 3301	1					
28	GB/T818	screw M5×25	01.01.3081	1					
29	GJB25D.00.00-6	fuel tank bush	03.06.403	1					
30	GJB25D.03.00-4	fuel tank	05.01.04.1 196	1					

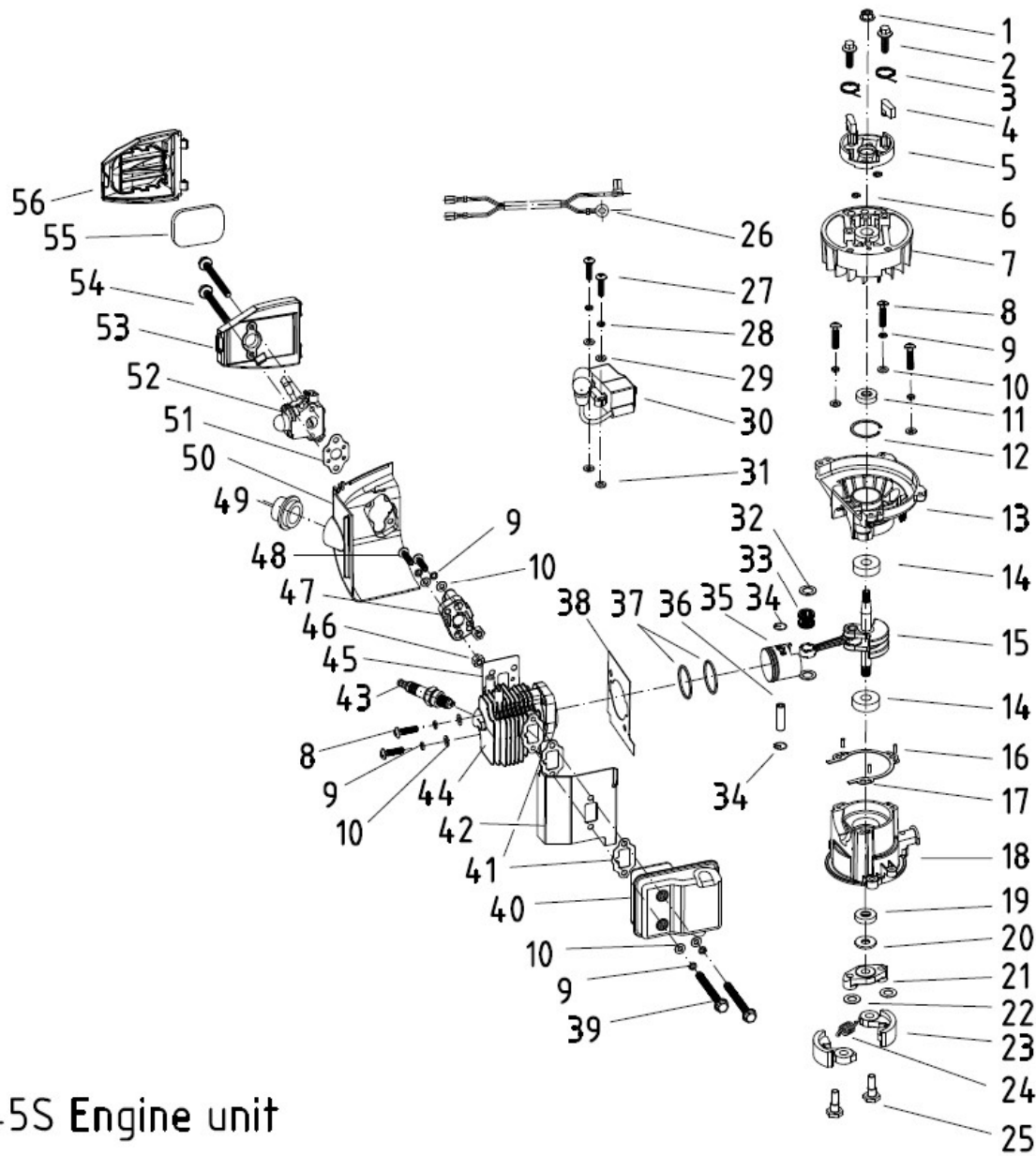


THT245S_ Cutting unit

THT245S CUTTING UNIT

NO.	Part num	Description (En)	BOM NO.	QTY	NO.	Part num	Description (En)	BOM NO.	QTY
1	GJB25D. 04. 00-8	clutch drum	06. 06. 400	1	31	GJB25S. 06. 00-1	top plate	06. 02. 139	1
2	GJB25D. 04. 01-00	grease nipple	03. 04. 1. 00 6	1	32	GJB25S. 07. 00-2	blade cover	01. 03. 0100	1
3	GJB25D. 04. 00-4	gear case	06. 06. 387	1	33	GB/T70. 1	screw M5×10	04. 06. 01. 0 0401	4
4	GJB25S. 00. 02-00	throttle cable splint	06. 06. 422	1	34	GJB25S. 06. 00-6	affle plate	03. 04. 1. 01 2	1
5	GB/T97. 1	plain washer 6	01. 04. 0321	3	35	GJB25D. 06. 00-5	blade washer plate	01. 03. 0101	1
6	GB/T93	spring lock washer 6	01. 04. 0322	4	36	GJB25S. 06. 03-00	front handle	04. 06. 01. 0 0402	1
7	GB/T70. 1	screw M6×22	01. 01. 2081	3	37	GJB25S. 06. 00-7	fixing seat	03. 04. 1. 01 3	4
8	GB/T276	bearing 6001-2Z 12×28×8	01. 05. 1400	2	38	GB/T6186	hexagon nut with flange M5	01. 03. 0102	7
9	GJB25D. 04. 00-9	gear case gasket	08. 045	1	39	GB/T818	bolt M5×12	01. 01. 3101	1
10	GJB25D. 04. 00-6	link rod gasket	06. 06. 395	2					
11	GB/T893. 1	circlips for holes 28	01. 04. 1131	1					
12	GB/T818	screw M4×10	01. 01. 3061	4					
13	GJB25D. 04. 00-10	gear shaft	06. 06. 401	1					
14	GB/T276	bearing 61805-2Z 25×37×7	01. 05. 1401	2					
15	GJB25D. 04. 00-7	eccentricity gear	06. 06. 399	1					
16	GJB25D. 04. 00-11	link rod	06. 06. 402	2					
17	GB/T119. 2	pin 6×35	01. 05. 0311	1					
18	GB/T119. 2	pin 3×9	01. 05. 0161	2					
19	GJB25D. 04. 00-5	gear case cover	06. 06. 388	1					
20	GB/T97. 1	plain washer 5	06. 06. 385	16					
21	GB/T93	spring lock washer 5	01. 04. 0091	16					
22	GB/T70. 1	screw M5×18	01. 01. 4251	10					
23	GJB25D. 04. 00-1	felt seal	03. 04. 1. 00 7	1					
24	GJB25D. 04. 00-2	rectangular plate	06. 06. 394	1					

25	GB/T70.1	screw M5×30	01.01.2161	4					
26	GB/T70.1	screw M5×20	01.01.2141	1					
27	GJB25S.06.00-2	bottom plate	06.02.140	1					
28	GJB25S.06.00-3	bush	06.02.141	9					
29	GJB25S.06.01-00	top blade	06.02.137	1					
30	GJB25S.06.02-00	bottom blade	06.02.138	1					



THT245S Engine unit

THT245D/S ENGINE UNIT

NO.	Part num	Description(En)	BOM NO.	QTY	NO.	Part num	Description(En)	BOM NO.	QTY
1	GB/T6187.1	hexagon nut with flange M6	01.03.0233	1	30	GJB25D.01.11.01-00	ignition coil	02.35.19	1
2	GB/T70.2	hexagon lobular socket pan head screw M6×16	01.01.4341	2	31	YD25.01.00.00-2	ignition gasket	06.06.111	2
3	GJB25D.01.00.03-3	ratchet torsion rod spring	06.06.383	2	32	YD25.01.03.00-3	needle bearing washer	06.06.139	2
4	GJB25D.01.00.03-2	ratchet		2	33	YD25.01.03.05-00	needle bearing 8×11×9	01.05.1250	1
5	GJB25D.01.00.03-1	start pulley		1	34	YD36.01.03.00-4	circlips	06.06.398	2
6	GB/T896	E rings 4		2	35	GJB25D.01.03.02-00	piston	06.06.396	1
7	GJB25D.01.10.00-00	rotor wheel	02.36.11	1	36	GJB25D.01.03.00-2	piston pin	06.06.397	1
8	GB/T70.1	hexagon lobular socket head cap screw M5×25	01.01.2151	5	37	GJB25D.01.03.00-1	piston ring	06.06.407	2
9	GB/T93	spring lock washer 5	01.04.0091	9	38	GJB25D.01.00.01-00	cylinder gasket	08.04	1
10	GB/T97.1	plain washer 5	01.04.0121	9	39	GB/T70.1	hexagon lobular socket head cap screw M5×55	01.01.4311	2

11	GJB25D. 01. 00. 05-00	oil seals 10×26×5	03. 04. 1. 004	1	40	GJB25D. 01. 09. 01-00	muffler	06. 06. 499	1
12	GB/T893. 1	circlips for holes 26	01. 04. 1121	1	41	GJB25D. 01. 00. 00-9	muffler gasket	08. 043	2
13	GJB25D. 01. 01. 00-1	top crankcase	06. 06. 385	1	42	GJB25D. 01. 00. 00-2	guide flow plate	06. 06. 391	1
14	GB/T276	bearing 6000 10×26×8	01. 05. 1390	2	43	YD45. 01. 11. 04-00	spark plug	02. 35. 08	1
15	GJB25D. 01. 03. 01-00	crankshaft	06. 05. 023	1	44	GJB25D. 01. 00. 00-3	cylinder	05. 02. 01. 0 95	1
16	GB/T119. 2	pin 3×9	01. 05. 0161	3	45	GJB25D. 01. 00. 00-5	flow into tube gasket	08. 041	1
17	GJB25D. 01. 01. 00-3	crankcase gasket	08. 044	1	46	GB/T6175	nut M5	01. 03. 0192	2
18	GJB25D. 01. 01. 00-2	bottom crankcase	06. 06. 386	1	47	GJB25D-2. 01. 00. 07-00	flow into tube	04. 06. 01. 0 0803	1
19	GJB25D. 01. 00. 06-00	oil seals 10×20×5	03. 04. 1. 005	1	48	GB/T70. 1	hexagon lobular socket head cap screw M5×20	01. 01. 1721	2
20	GJB25D. 01. 00. 00-11	washer for clutch bracket	06. 06. 404	1	49	GJB25D. 01. 11. 00-1	spark plug cover	02. 35. 20	1
21	GJB25D. 01. 00. 00-12	clutch bracket	06. 06. 384	1	50	GJB25D. 01. 00. 00-1	cylinder cover	04. 06. 01. 0 0701	1
22	GJB25D. 01. 00. 00-16	wave spring washer	06. 06. 406	2	51	GJB25D-2. 01. 00. 00-6	carburetor gasket	08. 047	1
23	GJB25D. 01. 00. 04-00	clutch block	06. 06. 389	2	52	GJB25D-2. 01. 06. 00-00	carburetor	06. 06. 479	1

24	GJB25D.01.00.00-13	clutch spring	06.06.390	1	53	GJB25D-2.01.08.01-3	air filter base	04.06.01.0 1902	1
					54	GB/T9074.4	screw M5×60	01.01.4321	2
25	GJB25D.01.00.00-14	bolt for clutch	06.06.405	2	55	GJB25D-2.01.08.00-2	filter	04.06.01.0 2202	1
26	GJB25D.01.11.02-00	grounding wire A	02.34.53	1	56	GJB25D-2.01.08.00-1	air filter cover	04.06.01.0 2102	1
27	GB/T70.1	hexagon lobular socket head cap screw M4×20	01.01.1721	2					
28	GB/T97.1	plain washer 4	01.04.0251	2					
29	GB/T93	spring lock washer 4	01.04.0191	2					
THT245S Engine unit									