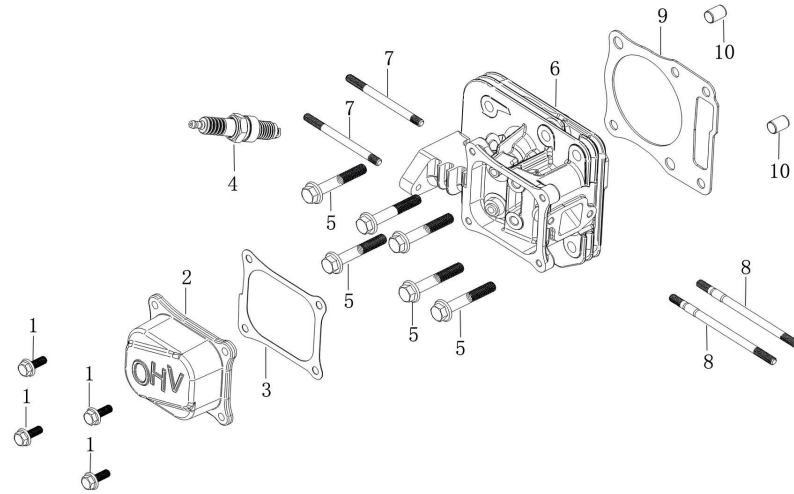
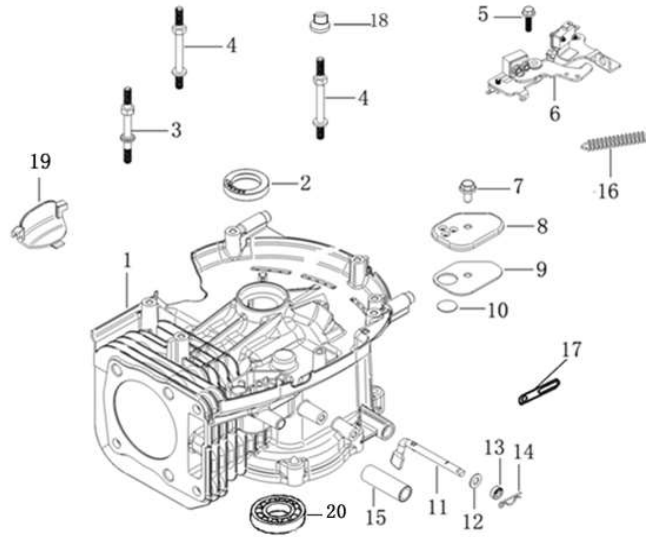


LC1P70F-3  
T342005050\_7173021



### 气缸头 ( CYLINDER HEAD)

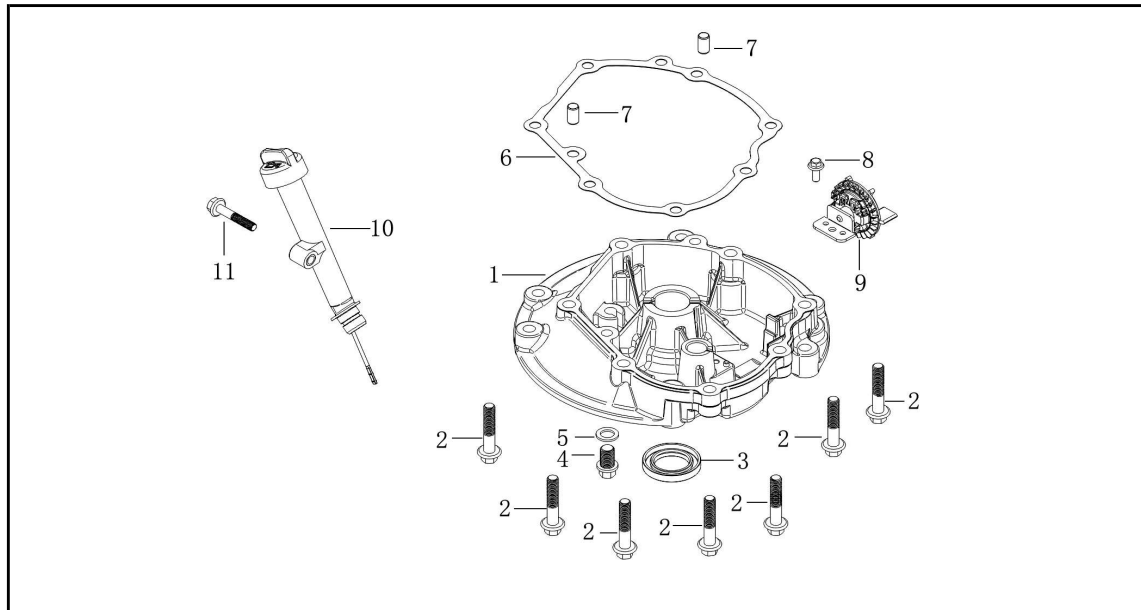
序号	零部件件号	零部件名称	Description	规格状态	数量	易损属性
No.	Part No.				Reqd. QTY	CONSUMABLE GRADE
1	380140013-0005	六角头法兰面螺栓	Hexagon bolt with flange	GB/T 5789_M6_L=16;镀蓝白锌Q16	4	C
2	120230152-0001	气缸头盖	Cylinder head cover	T450_2#_铝合金;	1	C
3	120250059-0001	气缸头盖密封垫	Gasket for cylinder head cover	T450_不含石棉纸垫;	1	A
4	270960014-0001	火花塞	Spark plug	F7RTC_无干扰;	1	A
5	380140339-0001	六角头法兰面螺栓	Hexagon bolt with flange	T320_M8_L=50;镀蓝白锌Q16	6	C
6	120080609-0002	气缸头	Cylinder head	T450;通机规格变更号TJ-GGBG 2018062	1	B
7	380180114-0001	双头螺栓	Stud	T300_M6_L=84;镀蓝白锌Q16	2	C
8	380180093-0001	双头螺栓	Stud	T040_M6_L=113;镀蓝白锌Q16	2	A
9	120150262-0002	气缸头密封垫	Gasket for cylinder head	T342_石墨;通机规格变更号TJ-GGBG 20	1	A
10	380600117-0001	定位销	ocation pin	T040_d=10_L=14;	2	C



### 曲轴箱(CRANK CASE)

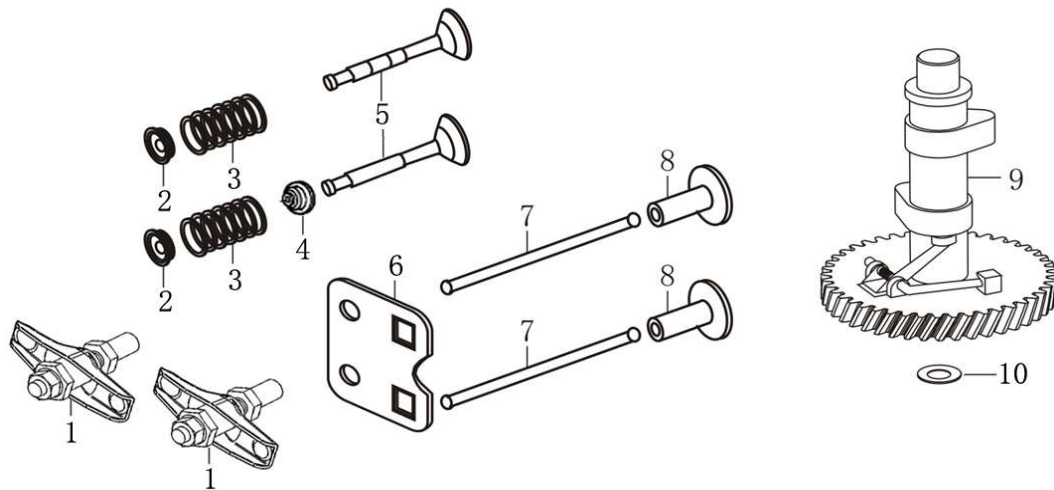
序号	零部件件号	零部件名称	Description	规格状态	数量	易损属性
No.	Part No.				Reqd. QTY	CONSUMABLE GRADE
1	110810409-0002	曲轴箱体	Crankcase body	T342_2#_可装轴承;通机规格变更号	1	B
2	380650335-0001	油封	Oil seal	T320_d=25_D=38_b=7;	1	B
3	380850002-0001	双头支撑螺栓	Stay stud	T320_M6_L=78.5;镀蓝白锌Q16	1	C
4	380850006-0001	双头支撑螺栓	Stay stud	T340_M6_L=85;镀蓝白锌Q16	2	C
5	380140086-0002	六角头法兰面螺栓	Hexagon bolt with flange	GB/T 5789_M6_L=22;镀蓝白锌Q16	1	C
6	293030019-0001	发动机制动器	Engine brake	T450_普通状态;	1	B
7	380140067-0003	六角头法兰面螺栓	Hexagon bolt with flange	GB/T 5789_M6_L=12;镀蓝白锌Q16	1	C
8	110840031-0001	呼吸槽盖板	CAP,BREATHER CHAMBER	T450;	1	C
9	110850021-0001	呼吸槽密封垫	PACKING, BREATHER CHAMBER	T450_软木橡胶板;	1	A
10	110860005-0001	呼吸片	Breath fin	T302;	1	A
11	171630023-0001	调速臂	Speed regulating arm	T450;	1	B
12	380450527-0001	平垫圈	Flat washer	T05K_T21_内径6_外径13_厚度1.6	1	C
13	380650338-0001	油封	Oil seal	T320_d=6_D=11_b=4;	1	B
14	381350004-0001	销夹	Pin clip	T040_调速臂用;	1	A





**曲轴箱盖 (CRANK CASE COVER)**

序号 No.	零部件件号 Part No.	零部件名称	Description	规格状态	数量 Reqd. QTY
1	110820220-0001	曲轴箱盖	Crankcase cover	T450_8#,侧面放油螺栓孔_安装高度45;	1
2	380140005-0006	六角头法兰面螺栓	Hexagon bolt with flange	GB/T 16674.1_M8_L=40;镀蓝白锌Q16	7
3	380650347-0001	油封	Oil seal	T320_d=25_D=41.25_b=6_丙烯酸脂CII;	1
4	110260025-0001	密封螺塞	Sealing plug screw	T040_M10×1.25×15;镀蓝白锌Q16	1
5	380450514-0001	平垫圈	Flat washer	T040_T21_内径10_外径16_厚度1.5_铝	1
6	110830062-0001	曲轴箱盖密封垫	Crankcase cover gasket	T450;	1
7	380600120-0001	定位销	ocation pin	T040_d=8_L=14;	2
8	380140167-0002	六角头法兰面螺栓	Hexagon bolt with flange	GB/T 16674.1_M5_L=12;镀蓝白锌Q16	1
9	171750031-0001	调速齿轮部件	Components of governor gear	T450;	1
10	110690105-0002	机油尺组合	Oil rule combination	T450_2#,加油管加大;本色黄5#Q82,杆氧	1
11	380140100-0003	六角头法兰面螺栓	Hexagon bolt with flange	GB/T 5789_M6_L=35;镀蓝白锌Q16	1



配气机构 (Camshaft)

序号 No.	零部件件号 Part No.	零部件名称	Description	规格状态	数量 Reqd. QTY	易损属性 CONSUMABLE GRADE
1	140450022-0001	气门摇臂组合	Valve rocker combination	T040;含Hg/Cr6/Pb/PBB/PBDE≤1000pp	2	B
2	140380020-0001	气门弹簧座	Retainer, valve spring	T320_排气门用;	2	B
3	140340039-0001	气门内弹簧	Inner spring of valve	T322_7圈;含Hg/Cr6/Pb/PBB/PBDE≤10	2	B
4	140400016-0001	挡油罩	Valve oil seal	T05K;含Hg/Cr6/Pb/PBB/PBDE≤1000pp	1	B
5	500550076-0001	气门套件	Valve Kit	T450;	1	B
6	140710015-0001	推杆限位板组合	Plate, push rod guide	T450;镀蓝白锌Q16	1	B
7	140670032-0001	挺杆组合	Push rod	T350_长140_整体实芯;	2	B
8	140690002-0001	挺柱	Lifter, Valve	T040;含Hg/Cr6/Pb/PBB/PBDE≤1000pp	2	B
9	140020189-0001	凸轮轴组合	Camshaft assy	T450_塑料齿2#;	1	B
10	380450534-0001	平垫圈	Flat washer	T320_T21_内径14.2_外径20_厚度1;抛光	1	C



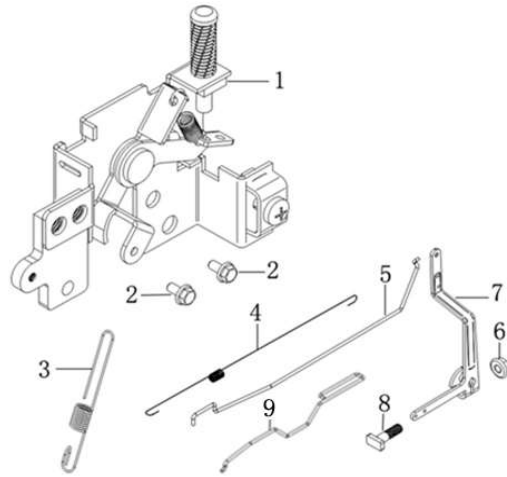












### 调速控制系统 (CONTROL SYSTEM)

序号	零部件件号	零部件名称	Description	规格状态	数量	易损属性
No.	Part No.				Reqd. QTY	CONSUMABLE GRADE
1	171680037-0001	油门操纵手柄组合	Throttle handle combination	T320_3#,可带熄火开关;镀蓝白锌 Q16	1	B
2	380140067-0003	六角头法兰面螺栓	Hexagon bolt with flange	GB/T 5789_M6_L=12;镀蓝白锌Q16	2	C
3	171600080-0001	调速弹簧	Governing spring	T450_10圈,簧径0.8,长60;	1	A
4	171610024-0001	节气门复位弹簧	throttle return spring	T450;	1	A
5	171590038-0001	油门拉杆	Throttle rod	T450_杆径2.5;	1	B
6	380370066-0001	六角法兰面螺母	Hexagon nut with flange	GB/T 6177.1_不带防滑齿_M6;镀蓝白锌Q16	1	C
7	171620015-0003	调速支架	Speed regulating bracket	T320;带方头平端紧定螺钉/六角法兰面螺母	1	C
8	380250002-0001	方头平端紧定螺钉	Square head set screw with flat point	T040_M6_L=21(13mm);调速支架固定	1	C
9	171650032-0001	阻风门拉杆	Choke valve pull rod	T450_长145;	1	B



