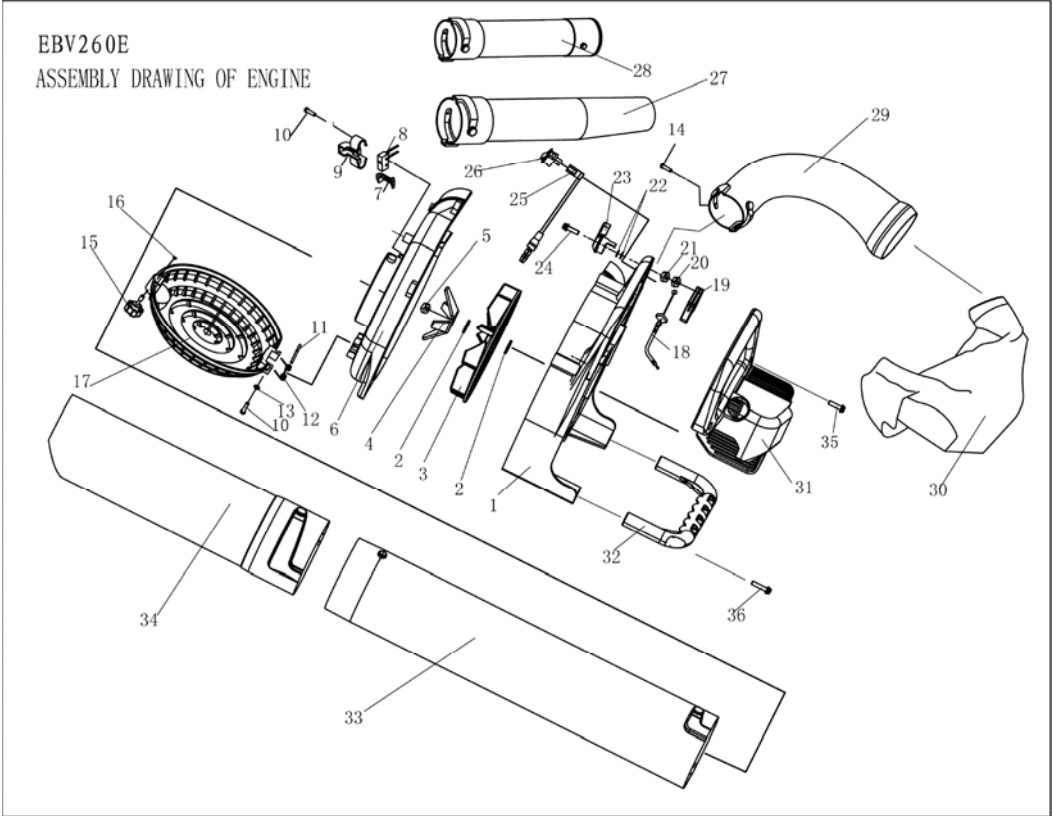


EBV260E GASOLINE ENGINE

NO.	Part No.	Part Name	Qty.	NO.	Part No.	Part Name	Qty.	NO.	Part No.	Part Name	Qty.	NO.	Part No.	Part Name	Qty.
1	GB/T9074.6	Screw M5×10	1	24	1E34F-E.3.1	MAGNETO ROTOR COMP.	1	47	EBV260E.1.5	Board seam	1	70	CG420.1.3.1-2	Gasket	1
2	1E34F.11-2	Start Rope Reel	1	25	EBV260E.1-3	LINK SHAFT	1	48	1E34F.4	Admitting Pipe	1	71	1E32FL.6.2-1	Fuel Tank Lid	1
3	1E34F.11-3	Rope	1	26	1E34F-E.3.2	IGNITION COIL COMP.	1	49	EBV260E.1-4	Gasket	2	72	1E32FL.6.2	Lid Ass'y	1
4	1E34F.11-1	Recoil Spring	1	27	EBV260E.1.2	Cord Comp	2	50	EBV260E.8A	Carburetor	1	73	1E40F-5A-3	Rubber washer	2
5	1E34F.11.1	Start Cover Ass'y	1	28	GB9074.13	Screw M5×20	2	51	EBV260E.1.3.1-2	Choker Handle	1	74	GB/T9074.4	Screw M5×25	2
6	GB/T9074.4	Screw M4×16	4	29	1E31F.4.1	Bearing	1	52	GB/T96.1	Washer 3	2	75	1E36F-E-11	Gasket	1
7	1E34F.11.1-1	Guide Bushing	1	30	1E34F.6-2	Ring	2	53	GB/T845	Screw ST2.9×6.5	2				
8	1E36F.1-1	Start Handle	1	31	1E34F-E.4-1	Piston	1	54	EBV260E.1.3.1-3	Cleaner inside cover	1				
9	1E36F.1-5	Resist Gasket	1	32	1E34F.6-3	Piston Pin	1	55	GB/T9074.4	Screw M5×60	2				
10	1E34F.11G	Starter(PA6-GF30)	1	33	1E34F.6-5	Piston Ring	2	56	EBV260E.1.3.1-1	Choker	1				
11	1E34F.8-1	Start pole	1	34	1E34F-E-3	Gasket	1	57	EBV260E.1.3.2	Filter Net	1				
12	1E34F.8-2	Spring	1	35	1E34F-E-1	Cylinder	1	58	EBV260E.1.3-1	Cleaner outside cover	1				
13	1E34F.8.1	Start Reel	1	36	GB/T70.1	Screw M5×20	4	59	EBV260E.1.3.2	Screw	1				
14	1E34F.8	Start Reel Ass'y	1	37	L8RTC	Spark Plug	1	60	1E34F.9.2-3A	Cleaner Cover	1				
15	1E36F.2	Oil-seal	2	38	1E40F-3A.8-2	Spring	1	61	1E34F.9.2-2	Fuel Pipe	1				
16	1E34F-E.6-1	Crank Case	1	39	1E34F.5-3	Plug Cap	1	62	1E36FF.8.1-1	Plug	1				
17	1E34F-E.6-2	Gasket	1	40	1E34F-E.3-1	Cap	1	63	GB/T13527.1	Fuel Pipe LS-3×1×80	1				
18	GB/T276	Bearing 6001/P5	2	41	1E40F-5.3-1	Plug	1	64	GB/T9074.4	Screw M5×16	2				
19	1E34F-E.4.1	Crank Shaft	1	42	EBV260E.1-1	Gaseket	1	65	EBV260E.1.4	Fuel Tank	1				
20	1E40FP-3Z.3-1	Key 3x5x13	1	43	EBV260E.1.1	Muffler	1	66	1E32FL.6.2-4	Chain	1				
21	GB/T119.2	Pin B3×10	2	44	EBV260E-5	Cover	1	67	1E32FL.6.2-3	End Cover	1				
22	1E34F-E.6-3	Crank Case	1	45	1E36F-2-9	Bolt	1	68	1E32FL.6.2-2	Inside Cover	1				
23	GB/T70.1	Screw M5×30	4	46	GB/T6187.1	Nut M5	2	69	EB-415.4.1.1-1	Inlet	1				



Appendix List of Attached Fig.2(EBV260E)

Ser. NO.	Part NO.	Part Name	Qty.	Ser. NO.	Part NO.	Part Name	Qty.	Ser. NO.	Part NO.	Part Name	Qty.
1	EBV260E. 2. 2	VOLUTE CASE	1	16	GB/T3452. 1	SEALING WASHER	1	31	EBV260E. 2-1	PROTECTION	1
2	EBV260E-6	WASHER	2	17	EBV260. 2-1	NET COVER	2	32	EBV260E-4	HANDGRIP	1
3	EBV260. 2. 1	IMPELLER	1	18	EB-260. 4	FUPL THROTTLE	2	33	EBV260A-1	PIPE	1
4	EBV260-2	COMMINUTE BOARD	1	19	EBV260. 3	SWITCH	1	34	EBV260-8	PIPE	1
5	GB/T889. 1 M8	NUT	1	20	GB/T6172. 1	NUT M5	1	35	GB9074. 4M5X16	SCREW	11
6	EBV260E. 2. 1. 1	VOLUTE CASE	1	21	GB/T6177. 1	NUT M5	1	36			
7	EBV260. 2. 3-1	SWITCH ANTENNA	1	22	EBV260E-2	WASHER	1	37			
8	EBV260. 2. 3. 2	SWITCH	1	23	EBV260E-3	SWITCH	1	38			
9	EBV260. 2. 3-2	SWITCH CARAPACE	1	24	GB9074. 4M5X30	SCREW	1	39			
10	GB/T818 M5X10	SCREW	3	25	EBV260E. 5	STOP WIRE	2	40			
11	EBV260. 2-2	SPING SCREW	1	26	EBV260E. 6	STOP SWITCH	1	41			
12	EBV260. 2-3	SPING	1	27	EB-260-8	PIPE	1	42			
13	GB96 6	WASHER	1	28	EB-260-7 (A)	PIPE	1	43			
14	GB9074. 4 M5X10	SCREW	1	29	EBV260-6	COLLECT PLUG	1	44			
15	EBV260. 2. 4	SCREW	1	30	EBV260E. 4	SACK	1	45			