

This catalog covers:

TJ023V-□F92

This fig. covers:

TITLE

PARTS CATALOG

2-STROKE ENGINE

TJ023V

PRODUCT CODE	NOTE
TJ023V-KF92	HEDGE-TRIMMER

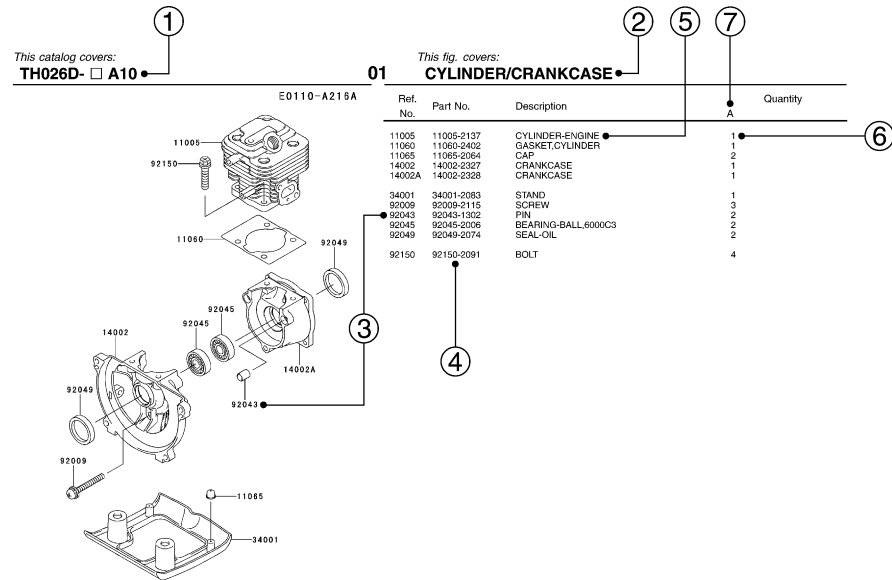
PARTS CATALOG INTRODUCTION

This parts catalog lists parts and sub-assemblies provided as service parts. When it becomes necessary to replace parts, always use KAWASAKI GENUINE PARTS which have passed strict inspection which guarantees quality and performance.

1. HOW TO ORDER PARTS

- When ordering the parts, be sure to use the parts catalog corresponding to the product code. Check the product revision codes on the product and the catalog.
 Product Code (example) : FA130D-**AA00**
 Product Revision Code
- Specify the part code (all digits) exactly as listed in this catalog on your parts order.
- The parts not shown in the illustrations of this catalog are not sold separately; only the complete units or next higher assemblies illustrated are supplied as the service parts.

2. EXPLANATION OF PARTS CATALOG FORMAT



- Product Code**
 This code describes the product code covered by this catalog. The product revision code, which is a part of the product code, is omitted.
- Part Group Title**
 This title is the representative name for the group of parts illustrated on the page.
- Reference Number**
 The reference numbers are shown on the illustration and the list as the link between them.

4) Part Number

This is the key of your parts ordering. Three kinds of part number are used in this catalog.

- Structure 1**
 □□□□□□-□□□□□□-□□
 □□□□□□-□□□□□□
 Part Revision Code
- Structure 2**
 □□□□□□-□□□□□□-□□
 Color Code for Painted Part
- Standard Hardware Number**
 (for bolts, nuts, washer, or the like)
 □□□□□□□□
 Size Code
 Material and Surface Treatment Code
 Item Code

5) Description and Additional Information

The part name, the location, the size, and the serial number as additional information, etc. are described here. Use them to find out and check the part required.

When a part number is changed without change of the product revision code and the changed parts are not interchangeable, the serial number of the product is noted as follows;

- (FA130 - 100001) : Affected units are from beginning of the product of the product code up to and including this serial number.
- (FA130 - 100002 -) : Affected units are from this serial number and above.
- (FA130 - 100002 - FA130 - 110001) : Affected units are in this serial number range.

6) Quantity

The figure shows quantity of the part required at the indicated position on the illustration and for the specified product revision code.

The asterisk (*) on this column means the part can be used as the substitute on the product and is supplied until the stock is exhausted.

Note: Some small parts will be supplied by units.

Example: If six (6) bolts are ordered and the minimum quantity per unit is five (5), two (2), units of the bolt will be delivered.

7) Product Revision Code

This Code indicates an important change which affects the service parts interchangeability.

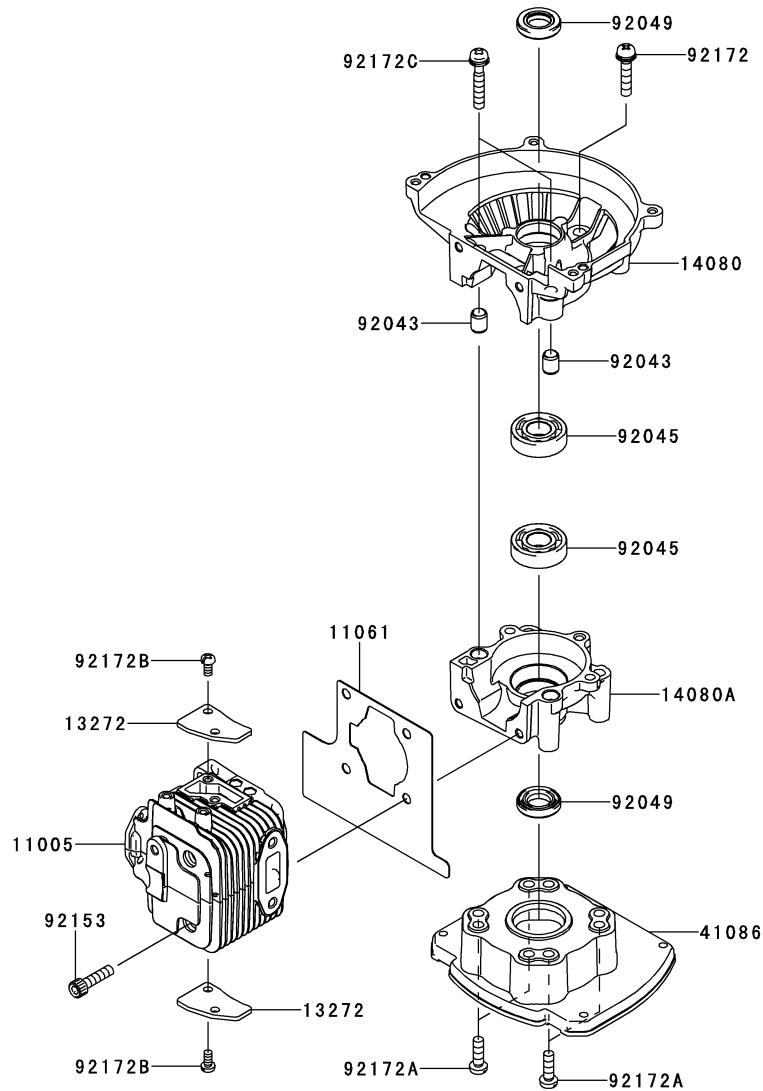
3. ABBREVIATIONS

#	Number	FR.....	Front	RH	Right Hand
&.....	And	G	Gram	RPM ...	Revolutions Per Minute
(+).....	Plus	HEX.....	Hexagonal	RR	Rear
(-).....	Minus	ID=.....	Inside Diameter	STD.....	Standard
2ND.....	Second	IN.....	Inch	T.....	Teeth
3RD	Third	L=.....	Length	T=.....	Thickness
4TH.....	Fourth	LH.....	Left Hand	U/S.....	Under Size
A.....	Ampere	LWR	Lower	UPP	Upper
AR.....	As Required	MM.....	Millimeter	V.....	Volt
ASSY.....	Assembly	O/S.....	Over Size	W.....	Watt
CNT	Center	OD=.....	Outside Diameter		
COMP.....	Complete	REF.....	Reference		

This catalog covers:
TJ023V- □ F92

This fig. covers:
01 CYLINDER/CRANKCASE

E0110-A877A



Ref. No.	Part No.	Description	Quantity
11005	11005-0646	CYLINDER-ENGINE	1
11061	11061-0771	GASKET	1
13272	13272-1188	PLATE	2
14080	14080-0628	CRANKCASE	1
14080A	14080-0629	CRANKCASE	1
41086	41086-0048	FLANGE	1
92043	92043-0755	PIN	2
92045	92045-2278	BEARING-BALL,6001C3	2
92049	92049-2269	SEAL-OIL,12X22X4.5	2
92153	92153-2136	BOLT,SOCKET,5X20	4
92172	92172-0758	SCREW,5X25	1
92172A	92172-0763	SCREW,5X16	4
92172B	92172-2103	SCREW,4X8	4
92172C	92172-2104	SCREW,5X30	2

This catalog covers:

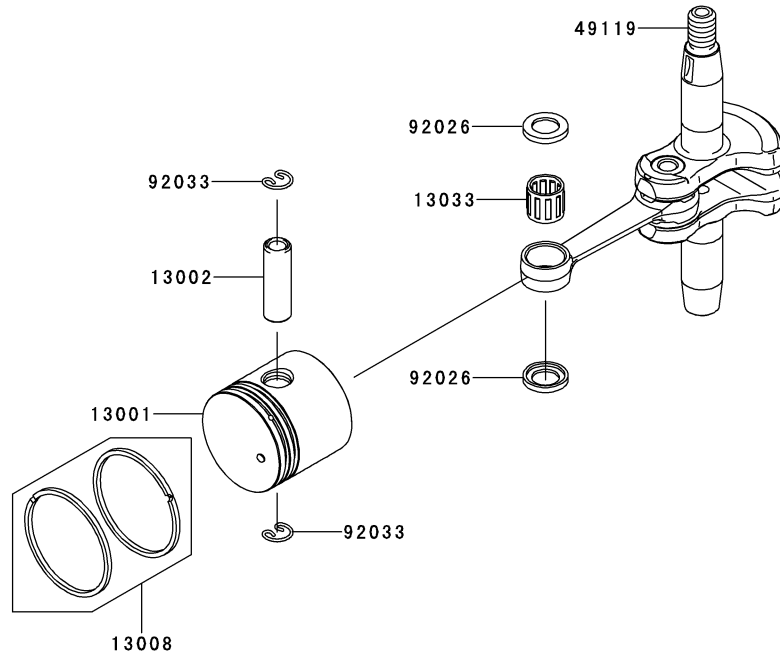
TJ023V- □ F92

This fig. covers:

02 PISTON/CRANKSHAFT

E0120-A508A

Ref. No.	Part No.	Description	Quantity
13001	13001-0724	PISTON-ENGINE	1
13002	13002-2100	PIN-PISTON	1
13008	13008-6072	RING-SET-PISTON	1
13033	13033-0558	BEARING-SMALL END	1
49119	49119-0578	CRANKSHAFT-ASSY	1
92026	92026-2356	SPACER	2
92033	92033-2198	RING-SNAP	2

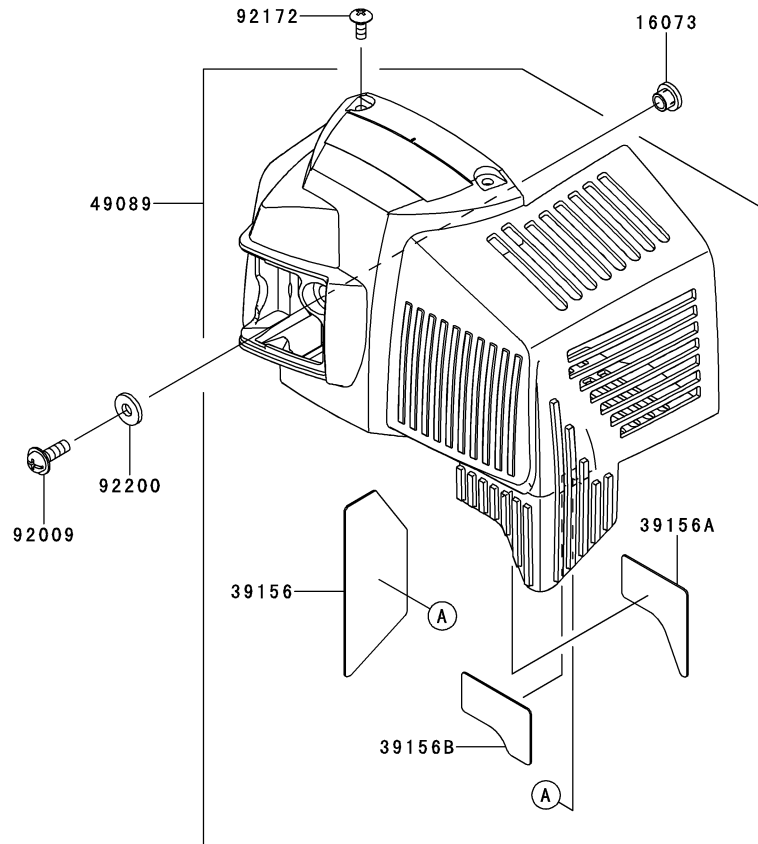


This catalog covers:
TJ023V- □ F92

This fig. covers:
03 COOLING-EQUIPMENT

E0150-B228A

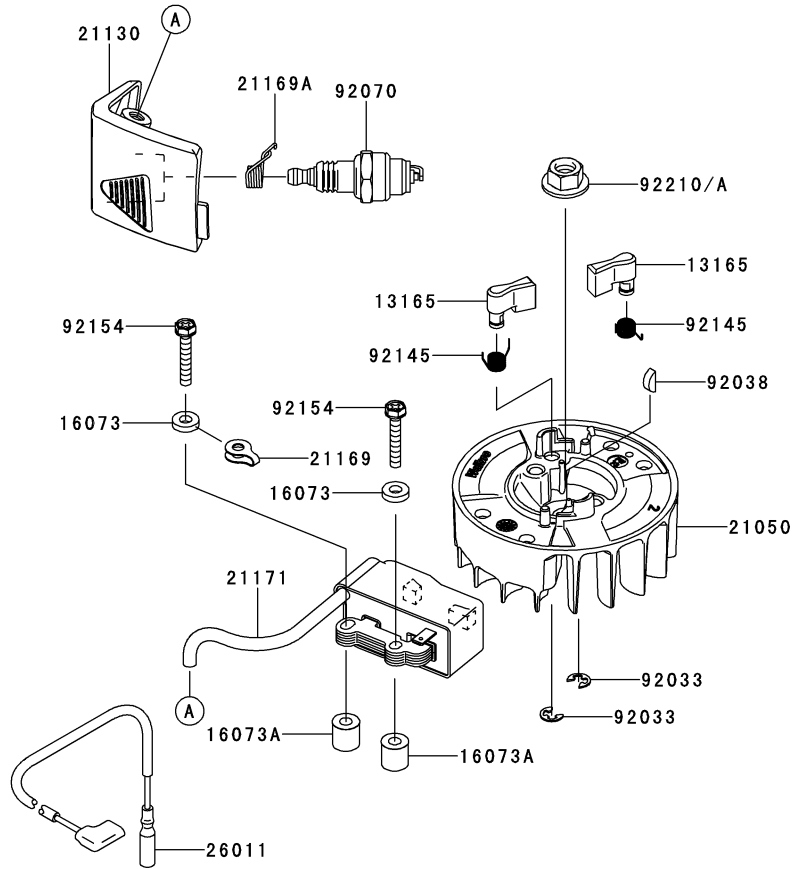
Ref. No.	Part No.	Description	K	Quantity
16073	16073-0725	INSULATOR	1	
39156	39156-0759	PAD	1	
39156A	39156-0760	PAD	1	
39156B	39156-0761	PAD	1	
49089	49089-0755	SHROUD-ENGINE	1	
92009	92009-2394	SCREW,5X16	1	
92172	92172-2060	SCREW,4X10	2	
92200	92200-0761	WASHER,5.5X13.8X2.0	1	



This catalog covers:
TJ023V- □ F92

This fig. covers:
04 ELECTRIC-EQUIPMENT

E0160-B756C



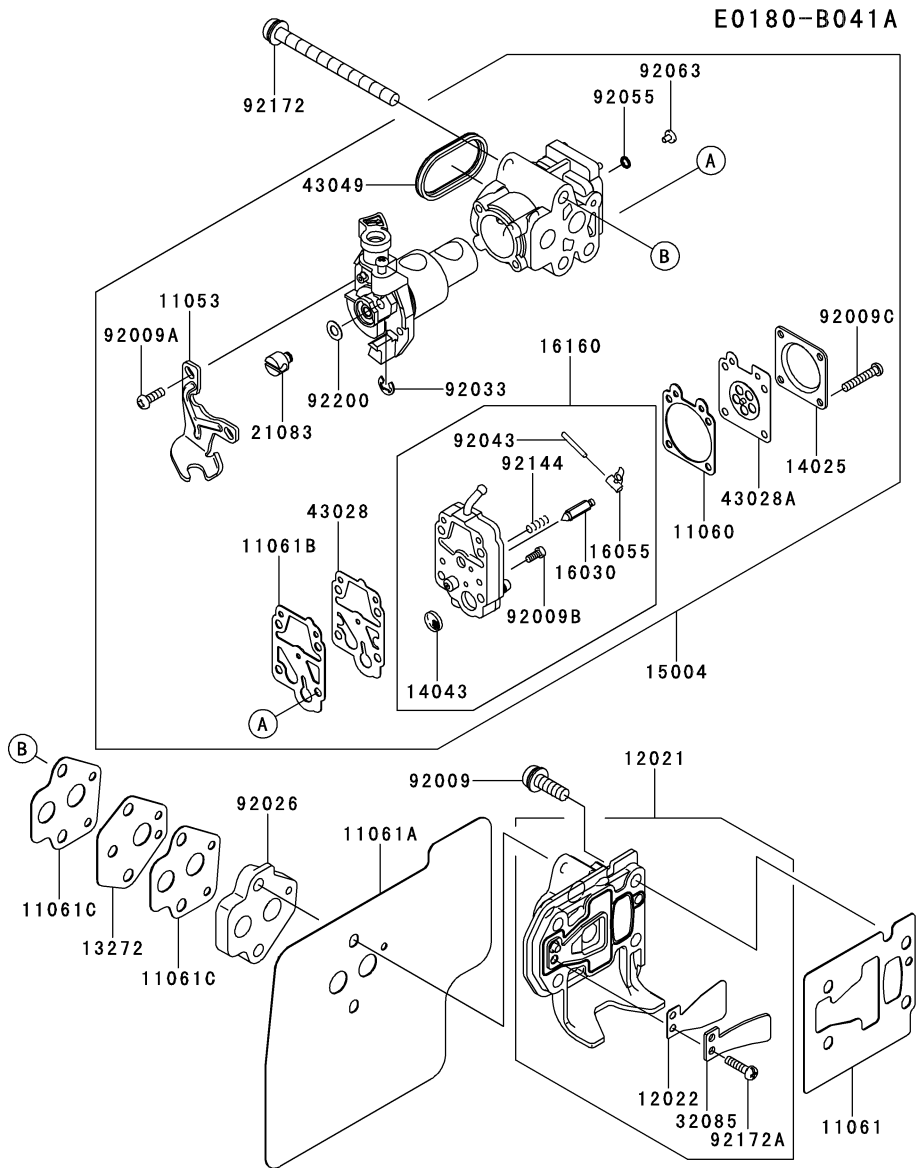
Ref. No.	Part No.	Description	Quantity
13165	13165-0563	PAWL	2
16073	16073-0780	INSULATOR	2
16073A	16073-2239	INSULATOR	2
21050	21050-0708	FLYWHEEL	1
21130	21130-0558	CAP-SPARK PLUG	1
21169	21169-0037	TERMINAL	1
21169A	21169-2078	TERMINAL	1
21171	21171-0031	COIL-ASSY-IGNITION	1
26011	26011-0833	WIRE-LEAD	1
92033	92033-0716	RING-SNAP	2
92038	92038-2106	KEY	1
92070	92070-2122	PLUG-SPARK,BPMR8Y(NGK)	1
92145	92145-0867	SPRING	2
92154	92154-2041	BOLT,4X25	2
92210	92210-0737	NUT,8MM	*
92210A	92210-2101	NUT,M8	1

This catalog covers:

TJ023V- □ F92

This fig. covers:

05 CARBURETOR



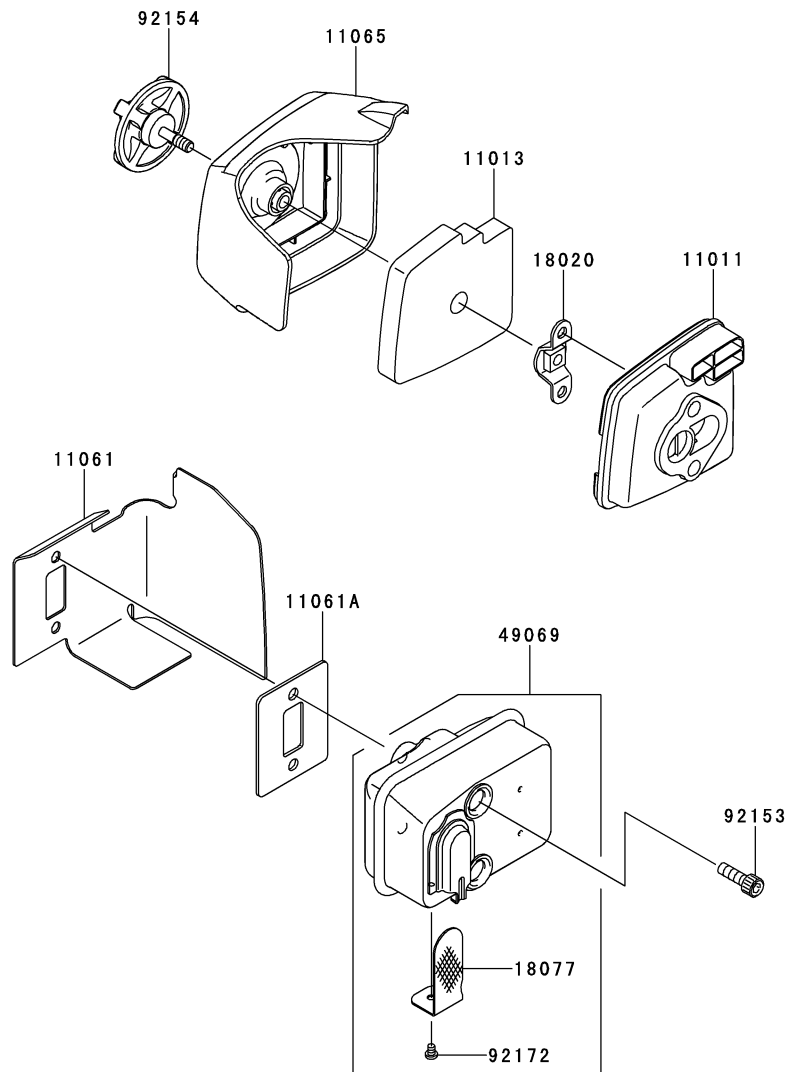
Ref. No.	Part No.	Description	Quantity
11053	11053-2066	BRACKET	1
11060	11060-2456	GASKET	1
11061	11061-0773	GASKET	1
11061A	11061-0774	GASKET	1
11061B	11061-2054	GASKET	1
11061C	11061-2248	GASKET,CARBURETOR/SPACER	2
12021	12021-0707	VALVE-ASSY-REED	1
12022	12022-2064	VALVE-REED	1
13272	13272-1410	PLATE	1
14025	14025-2157	COVER	1
14043	14043-2051	FILTER	1
15004	15004-0747	CARBURETOR-ASSY	1
16030	16030-2078	VALVE-FLOAT	1
16055	16055-2051	LEVER	1
16160	16160-2143	BODY	1
21083	21083-2073	ARM	1
32085	32085-2107	STOPPER	1
43028	43028-2067	DIAPHRAGM	1
43028A	43028-2096	DIAPHRAGM	1
43049	43049-2062	PACKING	1
92009	92009-2249	SCREW,5X20	4
92009A	92009-2277	SCREW	2
92009B	92009-2336	SCREW	1
92009C	92009-2438	SCREW	4
92026	92026-2367	SPACER	1
92033	92033-2078	RING-SNAP	1
92043	92043-2094	PIN	1
92055	92055-2147	RING-O	1
92063	92063-2368	JET-MAIN,#33.5	1
92144	92144-2308	SPRING	1
92172	92172-0830	SCREW,5X65	2
92172A	92172-2123	SCREW,3X12	1
92200	92200-2074	WASHER	1

This catalog covers:
TJ023V- □ F92

06 AIR-FILTER/MUFFLER

This fig. covers:

E0190-B550A

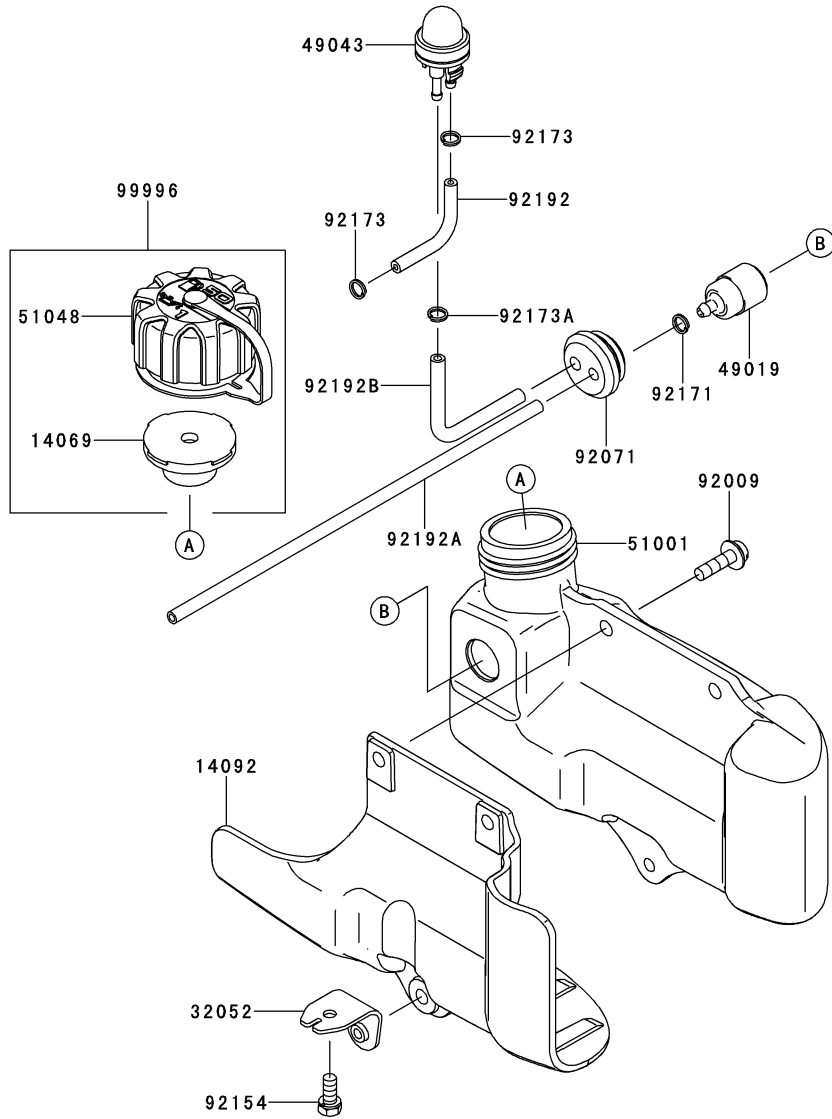


Ref. No.	Part No.	Description	Quantity
11011	11011-2396	CASE-AIR FILTER	1
11013	11013-2249	ELEMENT-AIR FILTER	1
11061	11061-0772	GASKET	1
11061A	11061-0867	GASKET	1
11065	11065-0740	CAP	1
18020	18020-2097	BAFFLE	1
18077	18077-2140	ARRESTER-SPARK	1
49069	49069-0723	MUFFLER-ASSY	1
92153	92153-2137	BOLT,SOCKET,5X16	2
92154	92154-2053	BOLT	1
92172	92172-2112	SCREW	1

This catalog covers:
TJ023V- □ F92

This fig. covers:
07 FUEL-TANK/FUEL-VALVE

E0200-A905A

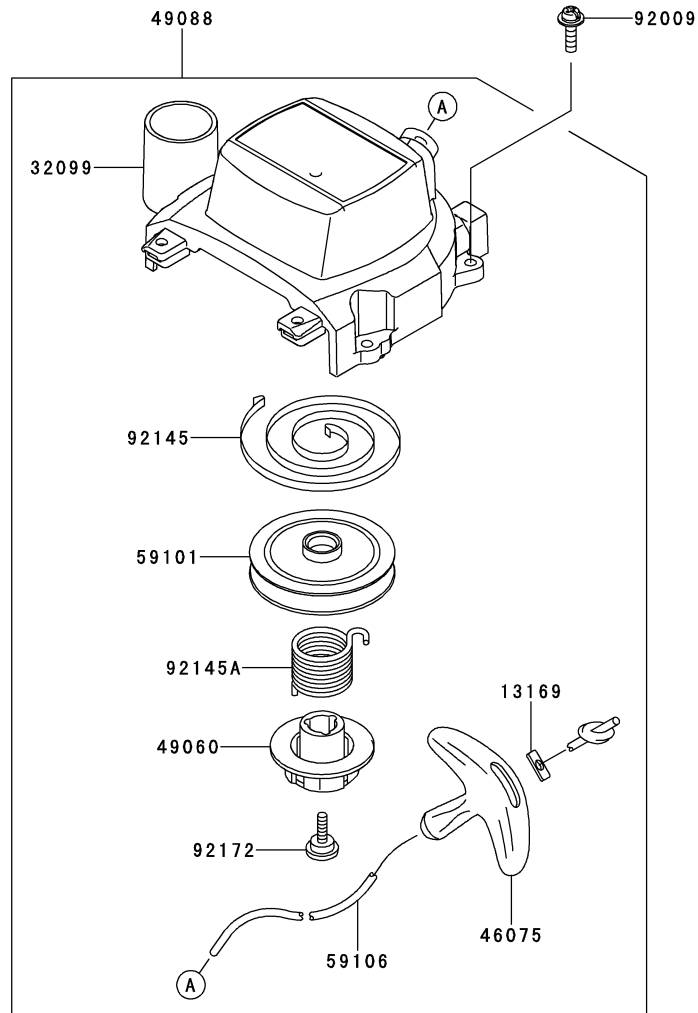


Ref. No.	Part No.	Description	Quantity
14069	14069-0017	BREATHER	1
14092	14092-1066	COVER, TANK	1
32052	32052-0715	BRACKET-TANK	1
49019	49019-2111	FILTER-FUEL	1
49043	49043-2074	PUMP-PRIMING, CARBURETOR	1
51001	51001-0723	TANK-COMP-FUEL	1
51048	51048-2083	CAP-ASSY-TANK	1
92009	92009-2383	SCREW, 5X20	3
92071	92071-2169	GROMMET	1
92154	92154-0874	BOLT, 5X12	1
92171	92171-2086	CLAMP	1
92173	92173-2018	CLAMP	2
92173A	92173-2022	CLAMP	1
92192	92192-1319	TUBE, 2.3X5X40	1
92192A	92192-2177	TUBE, 3X5X200	1
92192B	92192-2178	TUBE, 3X5.5X80	1
99996	99996-6107	CAP-TANK & BREATHER, ASSY	1

This catalog covers:
TJ023V- □ F92

This fig. covers:
08 STARTER

E0210-A688A

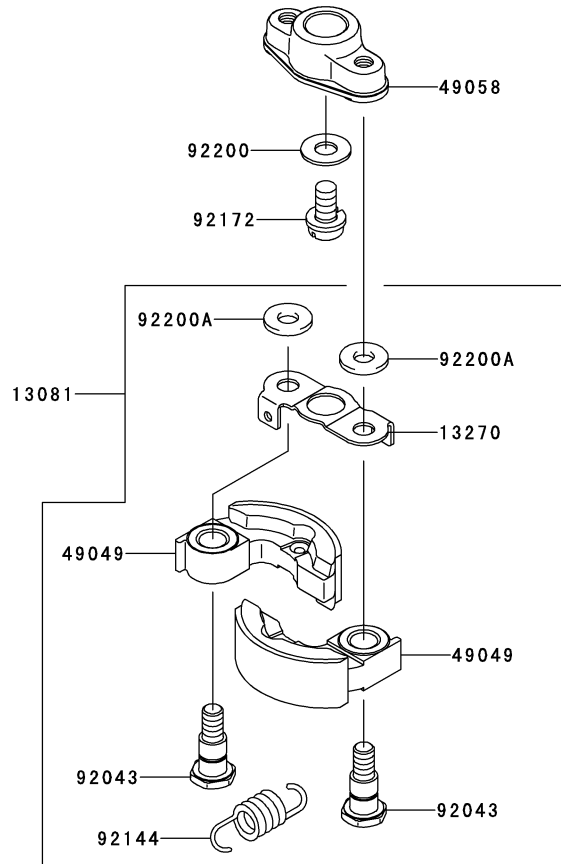


Ref. No.	Part No.	Description	K	Quantity
13169	13169-2386	PLATE,RECOIL STARTER		1
32099	32099-0749	CASE		1
46075	46075-2161	GRIP,STARTER-RECOIL		1
49060	49060-0017	CAM		1
49088	49088-0722	STARTER-RECOIL		1
59101	59101-0013	REEL		1
59106	59106-0556	ROPE,3X850		1
92009	92009-2386	SCREW,4X16		4
92145	92145-0850	SPRING,RECOIL		1
92145A	92145-2174	SPRING		1
92172	92172-2065	SCREW		1

This catalog covers:
TJ023V- □ F92

This fig. covers:
09 P.T.O-EQUIPMENT

E0220-A061A



Ref. No.	Part No.	Description	Quantity
13081	13081-0563	CLUTCH-ASSY	1
13270	13270-2051	PLATE	1
49049	49049-2096	SHOE-CLUTCH	2
49058	49058-0574	WHEEL	1
92043	92043-2075	PIN	2
92144	92144-2086	SPRING,CLUTCH	1
92172	92172-0762	SCREW,6X12	1
92200	92200-0762	WASHER,6.5X14.5X1	1
92200A	92200-2072	WASHER,6X14X1.6	2

This catalog covers:
TJ023V- □ F92

10 LABEL

This fig. covers:

F0290-B714C

Ref. No.	Part No.	Description	Quantity
56039	56039-0766	LABEL-PRODUCT	1
56071	56071-2010	LABEL-WARNING	1
56080	56080-0789	LABEL-BRAND	1

56071



56039



56080



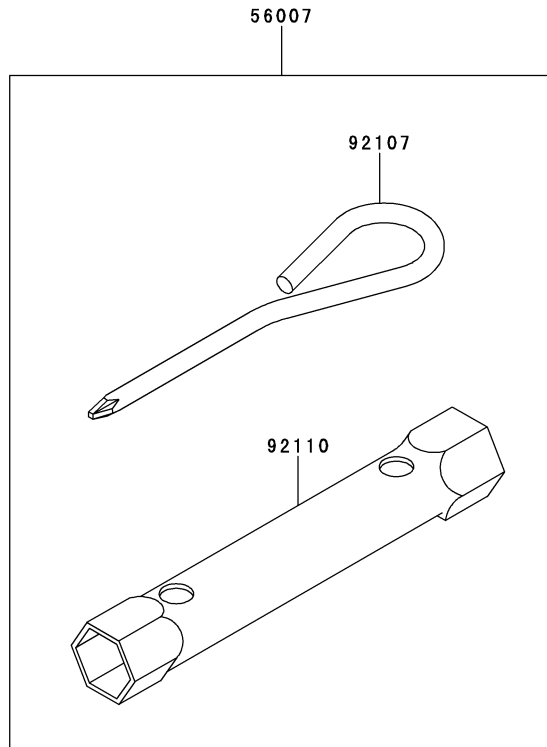
This catalog covers:
TJ023V- □ F92

11

This fig. covers:
TOOL

F0300-A048A

Ref. No.	Part No.	Description	K	Quantity
56007	56007-2051	TOOLKIT	1	
92107	92107-2057	TOOL-DRIVER	1	
92110	92110-2051	TOOL-WRENCH,19X21	1	



This catalog covers:

TJ023V- □ F92

This fig. covers:

PART NAME INDEX

AIR-FILTER/MUFFLER	06
CARBURETOR	05
COOLING-EQUIPMENT	03
CYLINDER/CRANKCASE	01
ELECTRIC-EQUIPMENT	04
FUEL-TANK/FUEL-VALVE	07
LABEL	10
P.T.O-EQUIPMENT	09
PISTON/CRANKSHAFT	02
STARTER	08
TOOL	11

This catalog covers:

TJ023V- □ F92

This fig. covers:

NUMERICAL PARTS INDEX

Part No.	Fig No.	Part No.	Fig No.	Part No.	Fig No.	Part No.	Fig No.	Part No.	Fig No.
11005-0646	01	49049-2096	09	92173-2018	07				
11011-2396	06	49058-0574	09	92173-2022	07				
11013-2249	06	49060-0017	08	92192-1319	07				
11053-2066	05	49069-0723	06	92192-2177	07				
11060-2456	05	49088-0722	08	92192-2178	07				
11061-0771	01	49089-0755	03	92200-0761	03				
11061-0772	06	49119-0578	02	92200-0762	09				
11061-0773	05	51001-0723	07	92200-2072	09				
11061-0774	05	51048-2083	07	92200-2074	05				
11061-0867	06	56007-2051	11	92210-0737	04				
11061-2054	05	56039-0766	10	92210-2101	04				
11061-2248	05	56071-2010	10	99996-6107	07				
11065-0740	06	56080-0789	10						
12021-0707	05	59101-0013	08						
12022-2064	05	59106-0556	08						
13001-0724	02	92009-2249	05						
13002-2100	02	92009-2277	05						
13008-6072	02	92009-2336	05						
13033-0558	02	92009-2383	07						
13081-0563	09	92009-2386	08						
13165-0563	04	92009-2394	03						
13169-2386	08	92009-2438	05						
13270-2051	09	92026-2356	02						
13272-1188	01	92026-2367	05						
13272-1410	05	92033-0716	04						
14025-2157	05	92033-2078	05						
14043-2051	05	92033-2198	02						
14069-0017	07	92038-2106	04						
14080-0628	01	92043-0755	01						
14080-0629	01	92043-2075	09						
14092-1066	07	92043-2094	05						
15004-0747	05	92045-2278	01						
16030-2078	05	92049-2269	01						
16055-2051	05	92055-2147	05						
16073-0725	03	92063-2368	05						
16073-0780	04	92070-2122	04						
16073-2239	04	92071-2169	07						
16160-2143	05	92107-2057	11						
18020-2097	06	92110-2051	11						
18077-2140	06	92144-2086	09						
21050-0708	04	92144-2308	05						
21083-2073	05	92145-0850	08						
21130-0558	04	92145-0867	04						
21169-0037	04	92145-2174	08						
21169-2078	04	92153-2136	01						
21171-0031	04	92153-2137	06						
26011-0833	04	92154-0874	07						
32052-0715	07	92154-2041	04						
32085-2107	05	92154-2053	06						
32099-0749	08	92171-2086	07						
39156-0759	03	92172-0758	01						
39156-0760	03	92172-0762	09						
39156-0761	03	92172-0763	01						
41086-0048	01	92172-0830	05						
43028-2067	05	92172-2060	03						
43028-2096	05	92172-2065	08						
43049-2062	05	92172-2103	01						
46075-2161	08	92172-2104	01						
49019-2111	07	92172-2112	06						
49043-2074	07	92172-2123	05						